

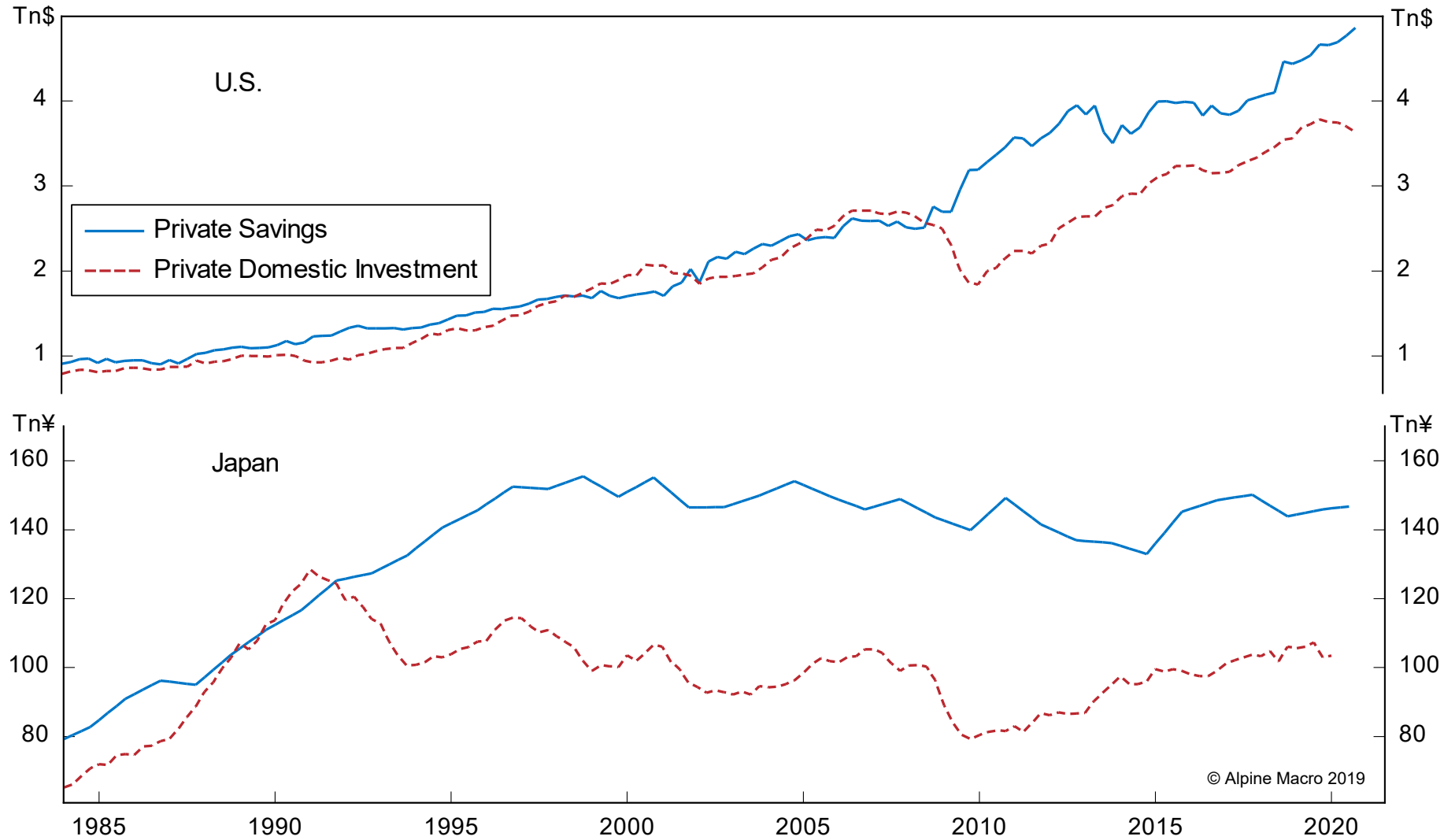
# MMT, COVID-19 And The Election

Presented by **Tony Boeckh**

[info@alpinemacro.com](mailto:info@alpinemacro.com)

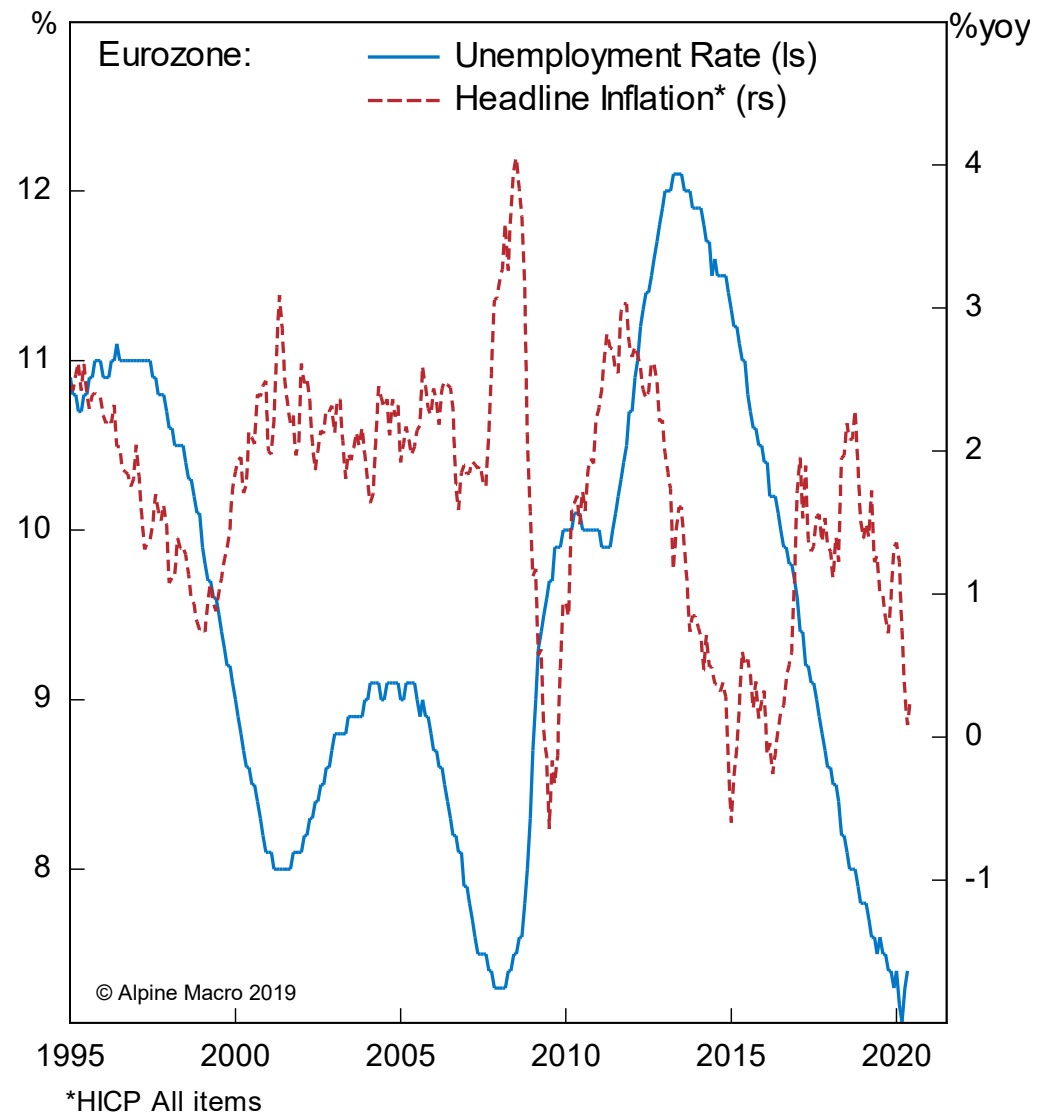
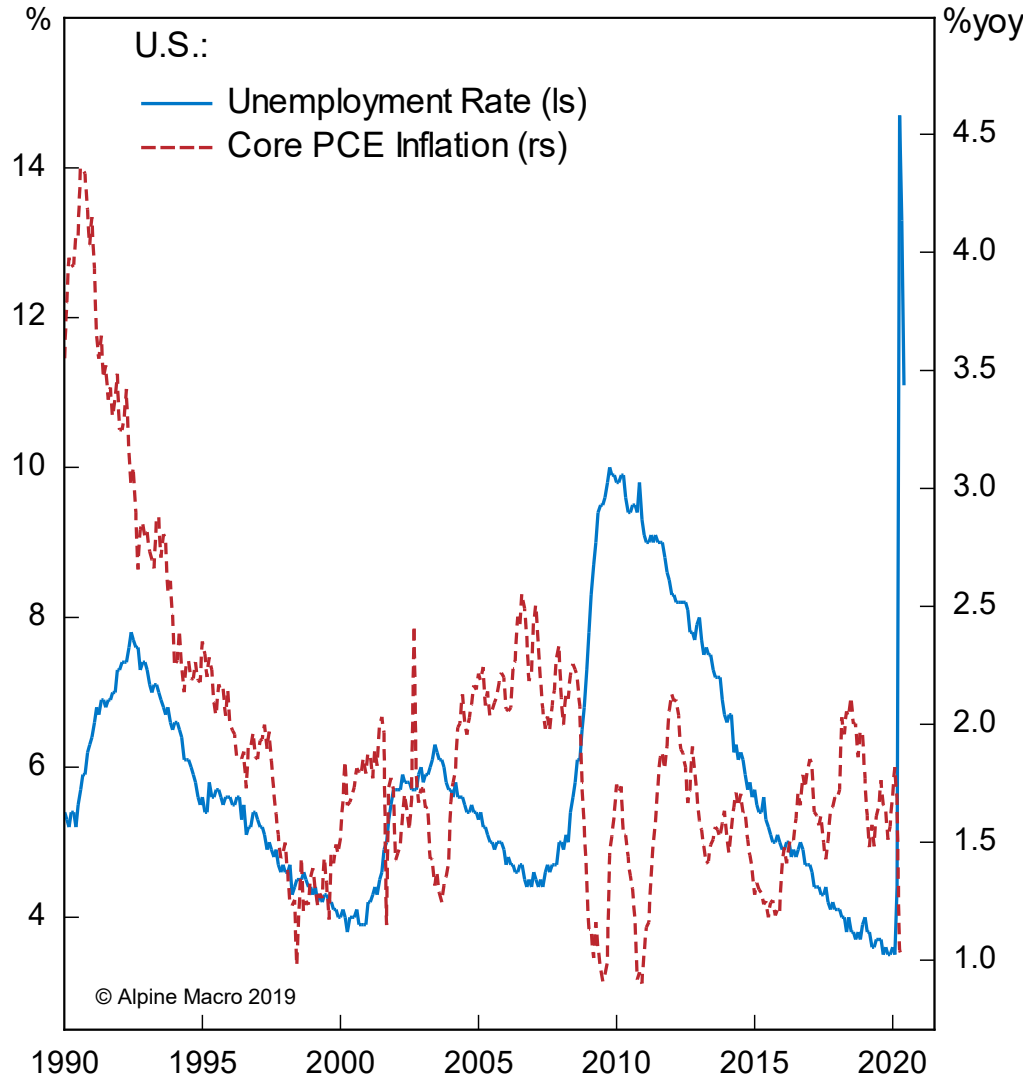
1-514-558-1414

# Private Sector Savings Surplus

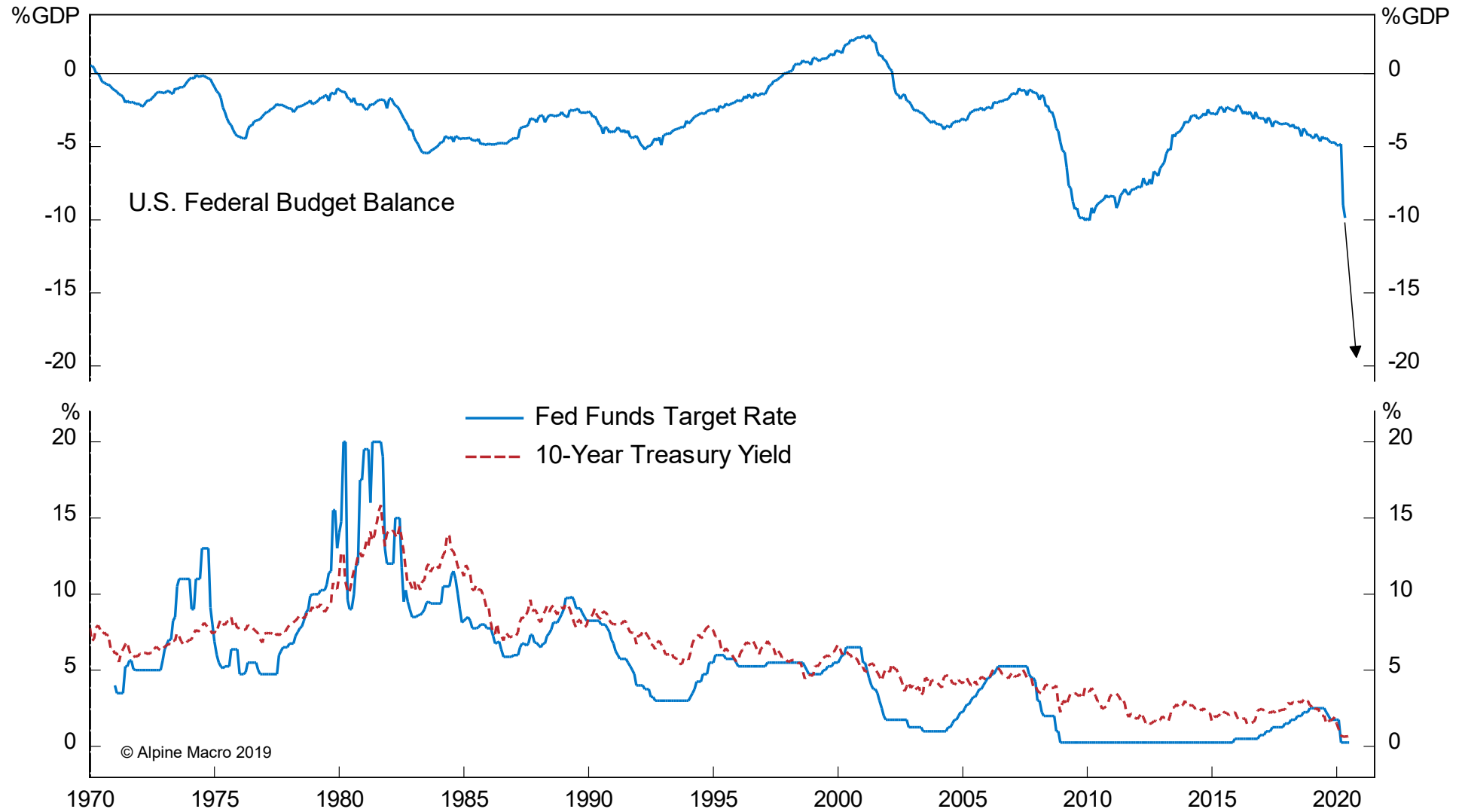


© Alpine Macro 2019

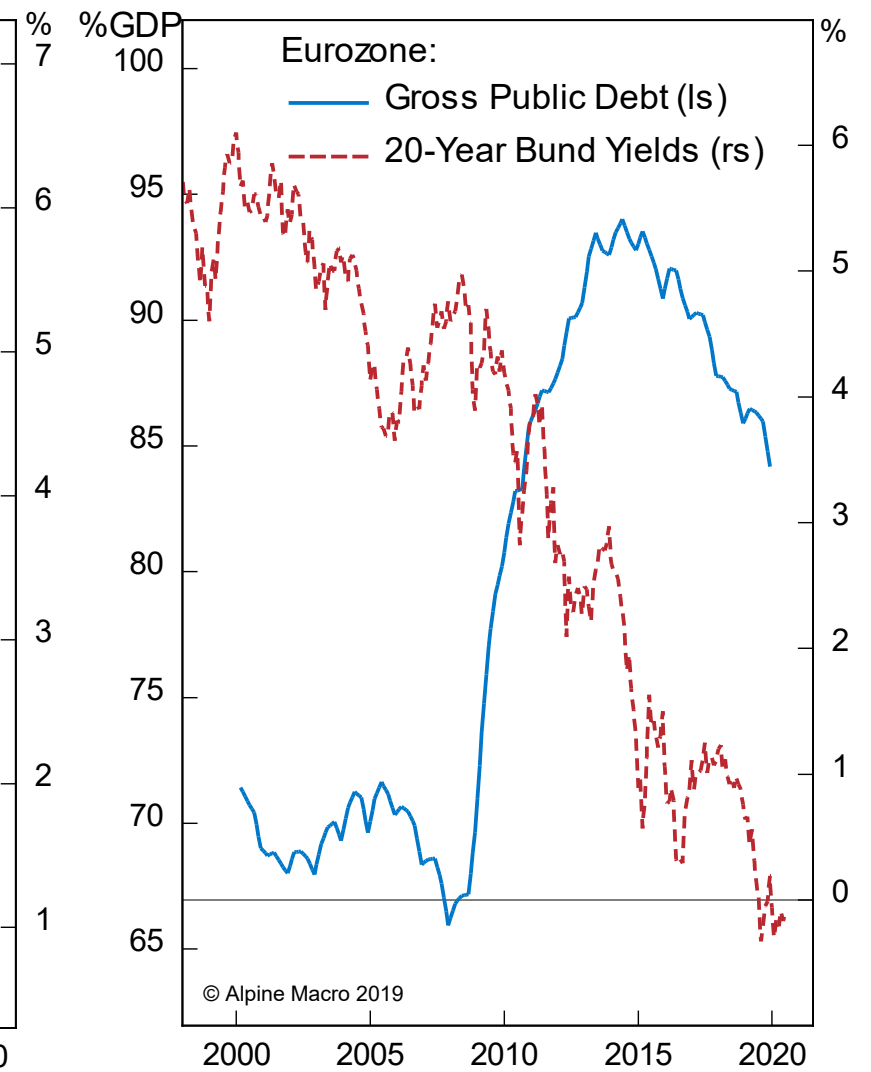
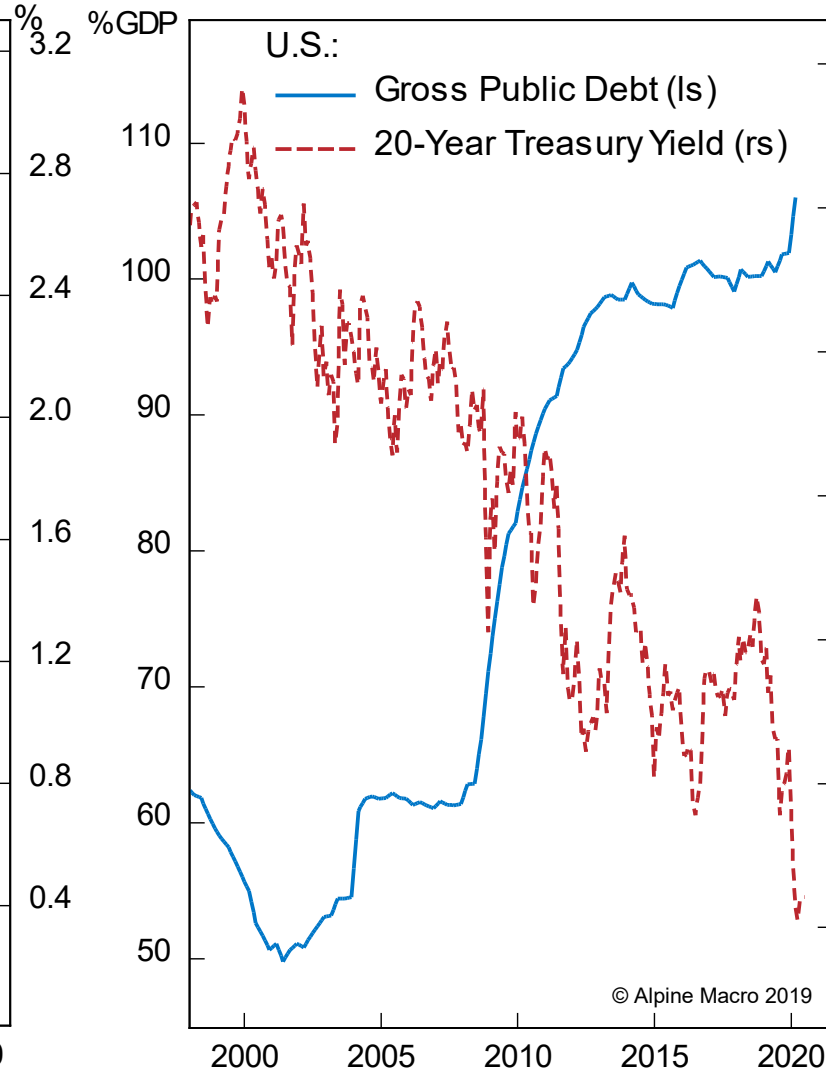
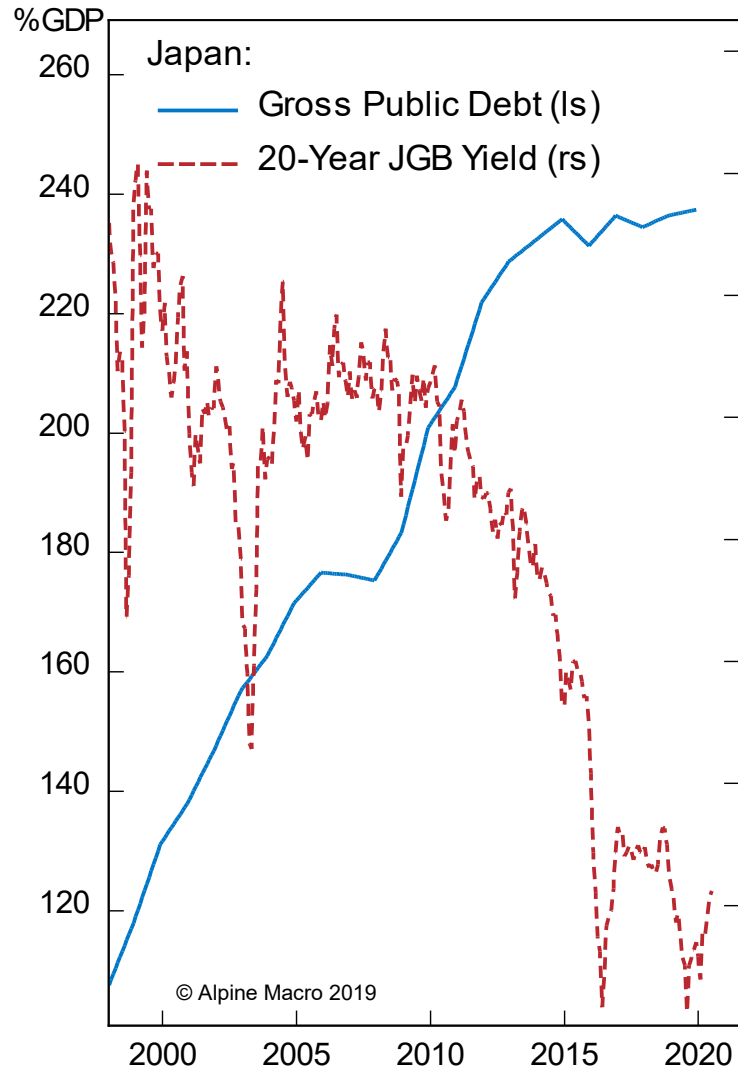
# Unemployment and Inflation Have Not Been Correlated Since 2000



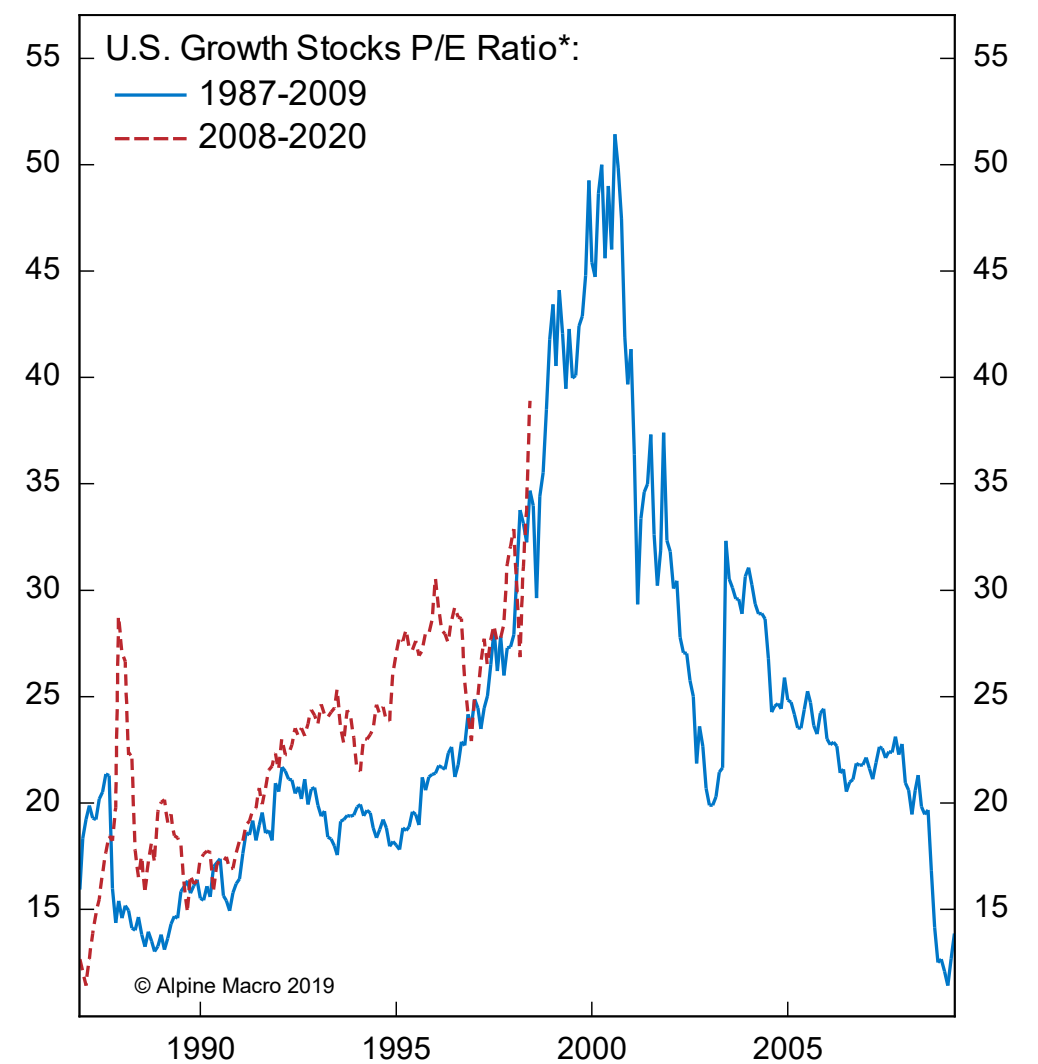
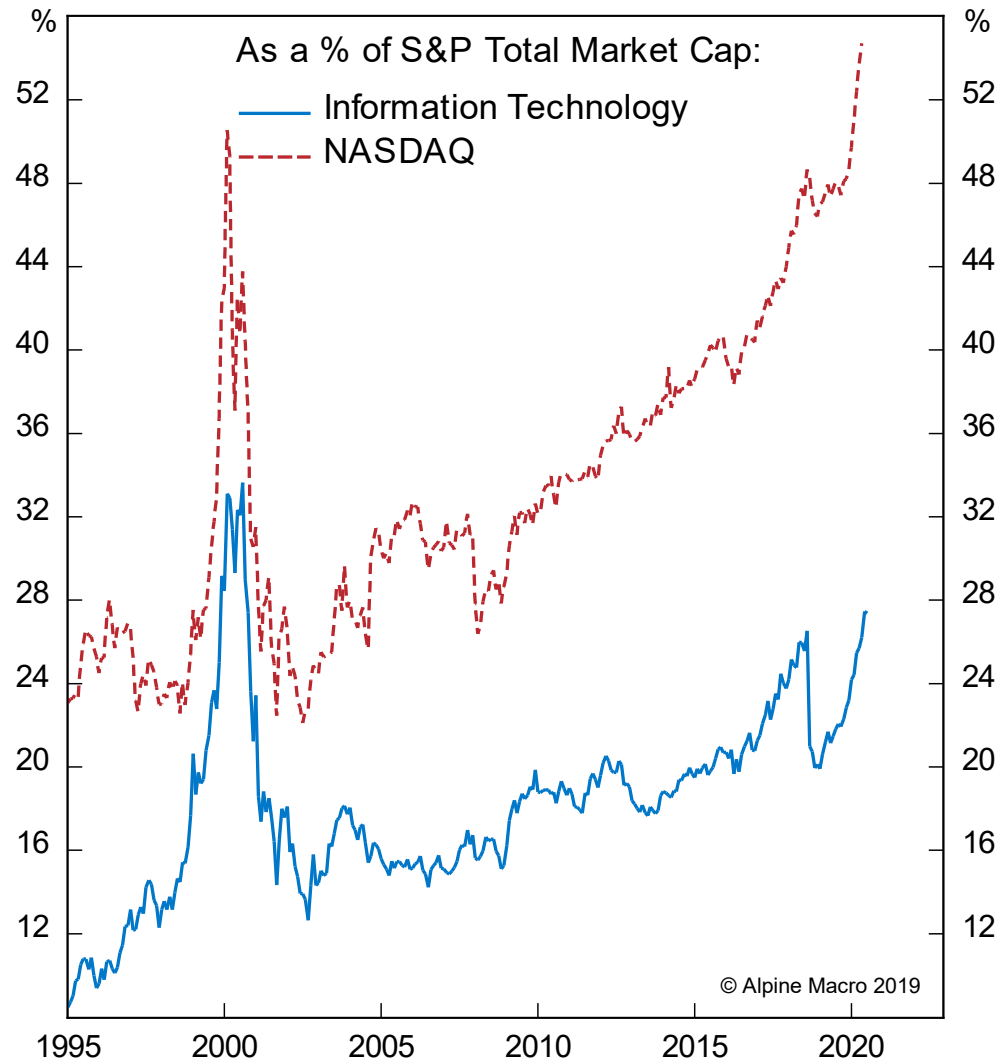
# Bigger Fiscal Imbalance & Lower Interest Rates: Is There Free Lunch?



# Public Sector Debt And Long-Term Bond Yields



# Signs Of A Tech Extreme



\*Source: MSCI Mid & Large Cap Index

---

**Copyright © 2020, Alpine Macro. All rights reserved.**

The information, recommendations, analysis and research materials presented in this document are provided for information purposes only and should not be considered or used as an offer or solicitation to sell or buy financial securities or other financial instruments or products, nor to constitute any advice or recommendation with respect to such securities, financial instruments or products. This document is produced for subscribers only and represents the general views of Alpine Macro, and does not constitute recommendations or advice for any specific person or entity receiving it. The text, images and other materials contained or displayed on any Alpine Macro products, services, reports, emails or website are proprietary to Alpine Macro and should not be circulated without the expressed authorization of Alpine Macro. Any use of graphs, text or other material from this report by the recipient must acknowledge Alpine Macro as the source and requires advance authorization. Alpine Macro relies on a variety of data providers for economic and financial market information. The data used in this publication may have been obtained from a variety of sources including Bloomberg, Macrobond, CEIC, Choice, MSCI, BofA Merrill Lynch and JP Morgan. The data used, or referred to, in this report are judged to be reliable, but Alpine Macro cannot be held responsible for the accuracy of data used herein.